

# PHILOTEA

Advanced Air Mobility Healthcare

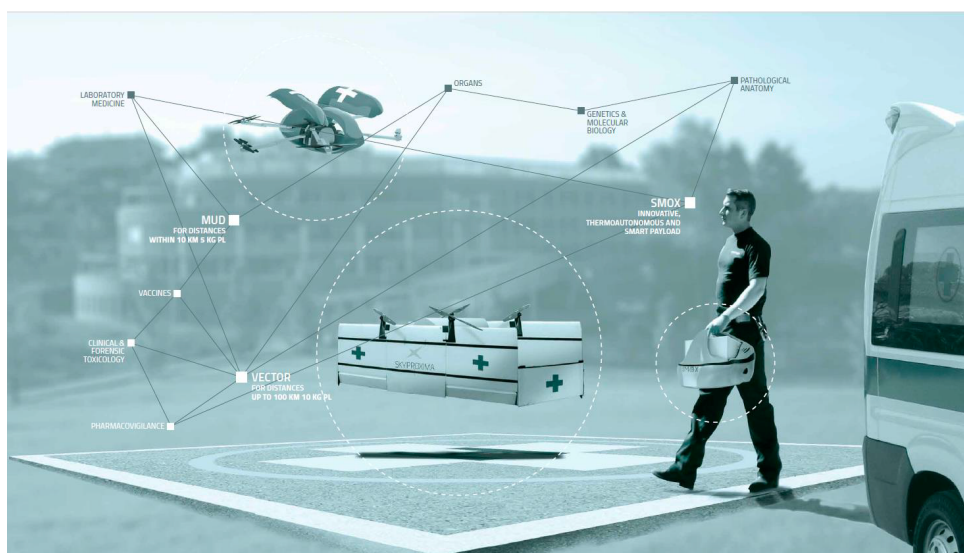
SKYPROXIMA is an Innovative Startup entering the industrial aerospace world by offering Advanced Air Mobility (AAM) solutions designed, developed and industrialized based on customer operational needs. With the active cooperation of highly qualified members and staff, we promote the new mobility paradigm in the healthcare sector: Advanced Air Mobility Healthcare (AAMH), building and certifying new logistics models, new flight platforms and aircraft with first-class technologies.

In recent years, in Italy and in Western countries, social, epidemiological and economic factors, such as an aging population, a steady increase in the incidence of chronic diseases, an increase in health culture, technological factors and the availability of new devices, new biological and life-saving drugs, vaccines, etc., are inducing a comprehensive reform of territorial care, which is even more evident in light of the Covid pandemic.<sup>19</sup>

In Europe, multidisciplinary and multi-professional models are being experimented with and spread to ensure continuity of care, care of chronic conditions and frailty, seeking a model of hospital-territory-primary care continuity with operational centers represented by the network of pharmacies and diagnostic centers, distributed throughout the territory. Alongside this scenario of health models, of fundamental importance to the PHILOTEA project is the preface to the AAM National Strategic Plan (2021-2030) for the development of Advanced Air Mobility in Italy, outlined by the President and General Director of ENAC (Civil Aviation National Authority). The native PHILOTEA project is intended for the public health environment by focusing and managing an integrated and eco-sustainable logistics network that rests on the following pillars:

- ❖ Original solution for Advanced Air Mobility;
- ❖ Original solution for low latency LTE/5G connectivity in Real Time;
- ❖ Original solutions of autonomous and connected IoT devices on the healthcare collaborative platform.
- ❖ Even local management solutions with trained staff.

PHILOTEA is compatible with the change that is taking place in the health sector with a progressive welfare model moving from forms of care centered on the acute hospitalized patient to forms of territorial care, with the gradual shift of the center of gravity from the hospital to territorial care, in parallel with the emergence of networks that provide for the centralization of services to facilities of excellence.



The path of the PHILOTEA program can be defined as process innovation of the fields of Laboratory Medicine, Transfusion Medicine and in different aspects of pharmacovigilance because it has the possibility to apply in any territorial context:

- (a) A collaborative infrastructure of the entire pre analytical and pre care phase of health and territorial network.
- (b) Smart and thermo-autonomous containers: SMOX®.
- (c) Fast and emergency vehicles: Urban Drone and Vtol Vector©
- d) Flight control platforms.
- (e) Intermediate stop and shelter platforms for UAS vehicles.



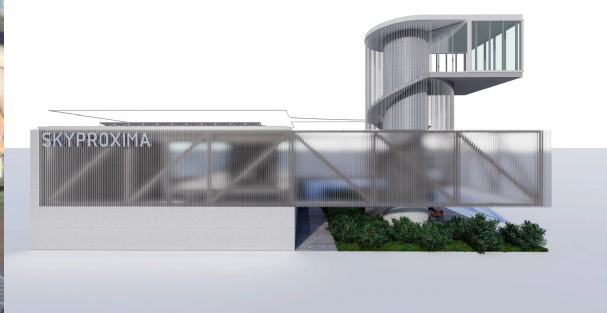
The implementation of the PHILOTEA program goes through an adjustment of the operational protocol that brings the innovative technologies represented into full operation:

- ❖ mobile health with use of medical drones (Urban and eVtol);
- ❖ platforms focused on IoT, big data analytics, artificial intelligence;
- ❖ LTE and 5G connectivity (PHOTONIC experimentation);
- ❖ new smart and thermos-autonomous payloads.

Philotea is complemented by the design and delivery of an innovative ground infrastructure as a service for future air mobility for the medical sector. An ultra-compact, rapidly deployable, multifunctional operational hub for manned and unmanned vehicles that provides aircraft command and control, reloading/refueling, cargo and passenger loading, and other mission-specific solutions.

These facilities can support critical disaster, emergency management, and security missions with EVTOL's innovative, rapidly deployable multiple airport infrastructure. Micro-airports support zero-carbon, off grid and rapid deployment solutions for emergency, security, humanitarian and disaster relief operations.

The PHILOTEA ecosystem can also be assembled as a key back-up option when traditional airports and seaports have suffered damage or other critical infrastructure has been compromised.



Daniele Gulic

Founder and CEO of Skyproxima. Computer scientist with experience, as a research associate at the University of Trieste, in the field of Satellite Remote Sensing. Many years of experience in international project management and technology development, member of Ja Alumni and member of the promoting committee for the new Aerospace District in FVG together with Leonardo, Fincantieri, Units, Uniud, SISSA, ICGTP and the Center for Experimental Physics.